



NATA LIGHTING CO.,LTD.  
www.nata.cn  
Email:info@nata.com  
Tel:+86-750-3770000 Fax:+86-750-3771111  
Address:380JinOu Road,GaoXin Zone,Jiang Men City,Guangdong,China

NT

Client:

LumCAT: 1-1383-L

Luminaire: 92.70.410.00

Report No: 20231106-B016

Ballast type: AC

Test No: 20231106-C016

Voltage(V): 35.120

LampCAT: Fortimo\_SLM\_C\_1203

Current(A): 0.246

Lamp flux(lm): 1385.0

Power (W): 8.639

Number of Lamps: 1

PF: 0.000

Length(mm): 0

Width(mm): 0

Phm Type: C

Height(mm): 0

### Photometric Results

Lumens(lm): 1315.57, Efficiency(%): 94.99% , Luminous Efficacy(lm/W): 152.28

Central intensity(cd): 2723.120, Maximum intensity(cd): 2723.120

Angle of maximum intensity: C=0.0  $\gamma$ =0.0

Beam Angle(50%Imax): [C0/180]Total=40.4

[C90/270]Total=40.4

Field angle(10%Imax): [C0/180]Total=63.8

[C90/270]Total=63.8

Beam angle of C0 plane : 40.32

Average BeamAngle(IEC 61341):40.32

Maximum s/h(1/2): C0\_180=0.67 C90\_270=0.67

Maximum s/h(1/4): C0\_180=0.64 C90\_270=0.64

Up flux rate of lamp(%): 0.00%

Down flux rate of lamp(%): 94.99%

Up flux rate of LUM(%): - -

Down flux rate of LUM(%): 100.00%

CIE Type : Direct lighting

Output flux ratio in  $\pi$  solid angle : 98.098%

$\gamma(^{\circ})$	Average I(cd)	Zonal F(lm)	Sum F(lm)	Eff Flux(%)	Eff Sum(%)
0.0	2723.120	0.000	0	0.00%	0.00%
1.0	2721.529	2.605	2.605	0.19%	0.20%
2.0	2711.219	7.798	10.403	0.56%	0.79%
3.0	2694.682	12.929	23.332	0.93%	1.77%
4.0	2671.918	17.964	41.296	1.30%	3.14%
5.0	2641.681	22.859	64.154	1.65%	4.88%
6.0	2605.356	27.575	91.729	1.99%	6.97%
7.0	2564.186	32.087	123.816	2.32%	9.41%
8.0	2516.305	36.360	160.176	2.63%	12.18%
9.0	2466.556	40.383	200.56	2.92%	15.25%
10.0	2411.687	44.146	244.706	3.19%	18.60%
11.0	2348.792	47.567	292.273	3.43%	22.22%
12.0	2272.542	50.518	342.791	3.65%	26.06%
13.0	2194.148	53.008	395.799	3.83%	30.09%
14.0	2106.066	55.042	450.842	3.97%	34.27%
15.0	2004.561	56.433	507.274	4.07%	38.56%
16.0	1892.678	57.105	564.38	4.12%	42.90%
17.0	1775.951	57.130	621.51	4.12%	47.24%
18.0	1658.671	56.629	678.139	4.09%	51.55%
19.0	1536.893	55.596	733.736	4.01%	55.77%
20.0	1389.804	53.567	787.302	3.87%	59.85%
21.0	1211.808	49.956	837.259	3.61%	63.64%
22.0	1141.986	47.300	884.559	3.42%	67.24%
23.0	1043.865	45.865	930.424	3.31%	70.72%
24.0	937.731	43.325	973.749	3.13%	74.02%
25.0	835.334	40.316	1014.065	2.91%	77.08%
26.0	741.219	37.215	1051.279	2.69%	79.91%
27.0	647.796	33.983	1085.262	2.45%	82.49%
28.0	560.448	30.590	1115.852	2.21%	84.82%
29.0	479.826	27.217	1143.069	1.97%	86.89%
30.0	398.560	23.716	1166.785	1.71%	88.69%
31.0	327.493	20.205	1186.99	1.46%	90.23%
32.0	267.469	17.045	1204.035	1.23%	91.52%
33.0	234.526	14.789	1218.824	1.07%	92.65%
34.0	176.363	12.435	1231.258	0.90%	93.59%
35.0	111.427	8.938	1240.196	0.65%	94.27%
36.0	80.616	6.115	1246.311	0.44%	94.74%
37.0	62.197	4.658	1250.969	0.34%	95.09%

$\gamma(^{\circ})$	Average I(cd)	Zonal F(lm)	Sum F(lm)	Eff Flux(%)	Eff Sum(%)
38.0	50.960	3.777	1254.746	0.27%	95.38%
39.0	43.508	3.224	1257.97	0.23%	95.62%
40.0	37.945	2.841	1260.811	0.21%	95.84%
41.0	33.406	2.541	1263.352	0.18%	96.03%
42.0	30.002	2.304	1265.655	0.17%	96.21%
43.0	26.777	2.103	1267.758	0.15%	96.37%
44.0	24.051	1.918	1269.677	0.14%	96.51%
45.0	21.837	1.764	1271.44	0.13%	96.65%
46.0	20.100	1.640	1273.081	0.12%	96.77%
47.0	18.710	1.544	1274.624	0.11%	96.89%
48.0	17.554	1.466	1276.09	0.11%	97.00%
49.0	16.578	1.402	1277.492	0.10%	97.11%
50.0	15.741	1.348	1278.839	0.10%	97.21%
51.0	15.035	1.302	1280.141	0.09%	97.31%
52.0	14.413	1.264	1281.405	0.09%	97.40%
53.0	13.852	1.230	1282.634	0.09%	97.50%
54.0	13.389	1.201	1283.835	0.09%	97.59%
55.0	12.897	1.173	1285.009	0.08%	97.68%
56.0	12.524	1.149	1286.157	0.08%	97.76%
57.0	12.150	1.128	1287.285	0.08%	97.85%
58.0	11.783	1.107	1288.392	0.08%	97.93%
59.0	11.472	1.087	1289.479	0.08%	98.02%
60.0	11.168	1.070	1290.549	0.08%	98.10%
61.0	10.877	1.052	1291.601	0.08%	98.18%
62.0	10.586	1.034	1292.635	0.07%	98.26%
63.0	10.358	1.019	1293.654	0.07%	98.33%
64.0	10.116	1.005	1294.658	0.07%	98.41%
65.0	9.915	0.991	1295.65	0.07%	98.49%
66.0	9.687	0.978	1296.628	0.07%	98.56%
67.0	9.465	0.963	1297.591	0.07%	98.63%
68.0	9.230	0.947	1298.538	0.07%	98.71%
69.0	9.030	0.932	1299.469	0.07%	98.78%
70.0	8.808	0.916	1300.386	0.07%	98.85%
71.0	8.628	0.901	1301.287	0.07%	98.91%
72.0	8.435	0.887	1302.174	0.06%	98.98%
73.0	8.248	0.872	1303.046	0.06%	99.05%
74.0	8.075	0.858	1303.904	0.06%	99.11%
75.0	7.881	0.843	1304.747	0.06%	99.18%

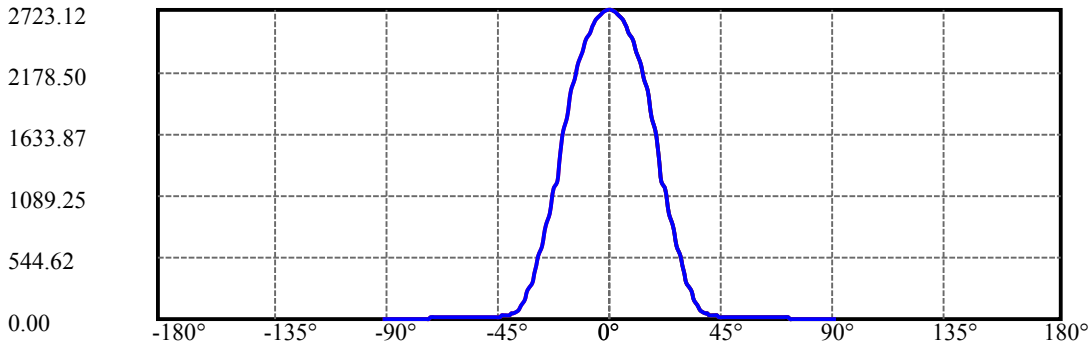
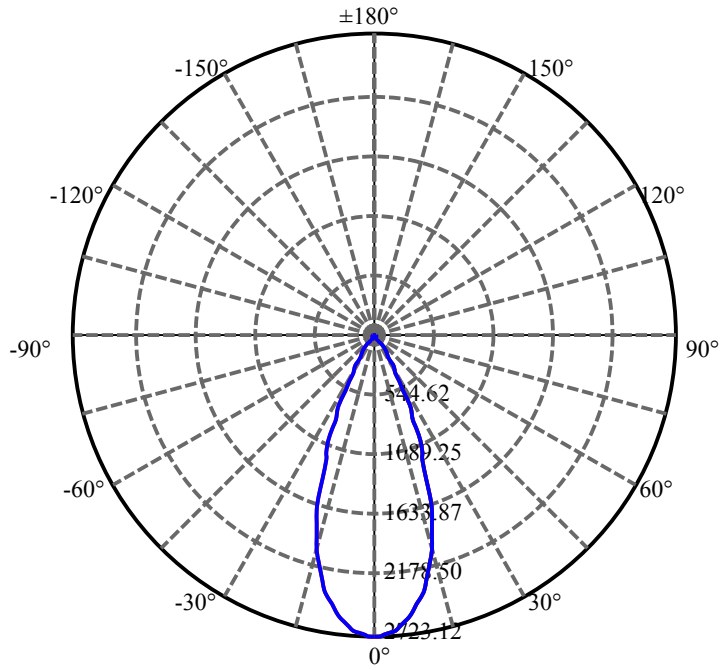
$\gamma(^{\circ})$	Average I(cd)	Zonal F(lm)	Sum F(lm)	Eff Flux(%)	Eff Sum(%)
76.0	7.687	0.826	1305.574	0.06%	99.24%
77.0	7.535	0.812	1306.385	0.06%	99.30%
78.0	7.369	0.798	1307.183	0.06%	99.36%
79.0	7.189	0.782	1307.965	0.06%	99.42%
80.0	6.995	0.765	1308.73	0.06%	99.48%
81.0	6.843	0.748	1309.479	0.05%	99.54%
82.0	6.684	0.734	1310.212	0.05%	99.59%
83.0	6.511	0.717	1310.929	0.05%	99.65%
84.0	6.373	0.702	1311.631	0.05%	99.70%
85.0	6.213	0.687	1312.318	0.05%	99.75%
86.0	6.082	0.672	1312.99	0.05%	99.80%
87.0	5.978	0.660	1313.65	0.05%	99.85%
88.0	5.874	0.649	1314.3	0.05%	99.90%
89.0	5.771	0.638	1314.938	0.05%	99.95%
90.0	5.701	0.629	1315.567	0.05%	100.00%

ZONAL LUMEN SUMMARY

Zone	Lumens	%Lamp	%Fixt
0-30	1166.78	84.24%	88.69%
0-40	1260.81	91.03%	95.84%
0-60	1290.55	93.18%	98.10%
0-90	1314.94	94.94%	99.95%
0-120	1314.94	94.94%	99.95%
0-180	1315.57	94.99%	100.00%
60-90	24.39	1.76%	1.85%
90-120	0.00	0.00%	0.00%
90-130	0.00	0.00%	0.00%
90-150	0.00	0.00%	0.00%
90-180	0.00	0.00%	0.00%
0-26.03	1052.45	75.99%	80.00%

ZONAL LUMEN SUMMARY

0-10	244.71
10-20	542.60
20-30	379.48
30-40	94.03
40-50	18.03
50-60	11.71
60-70	9.84
70-80	8.34
80-90	6.21
90-100	0.00
100-110	0.00
110-120	0.00
120-130	0.00
130-140	0.00
140-150	0.00
150-160	0.00
160-170	0.00
170-180	0.00



C0(Max): —————

C0/C180: —————

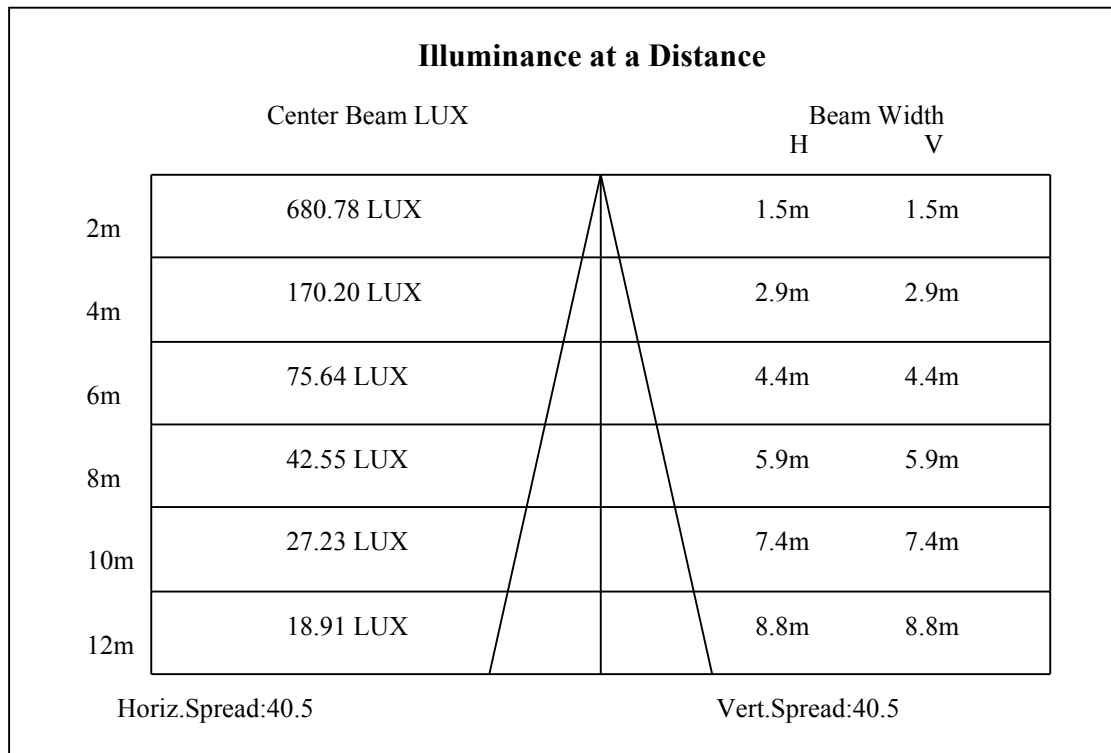
C90/C270: —————

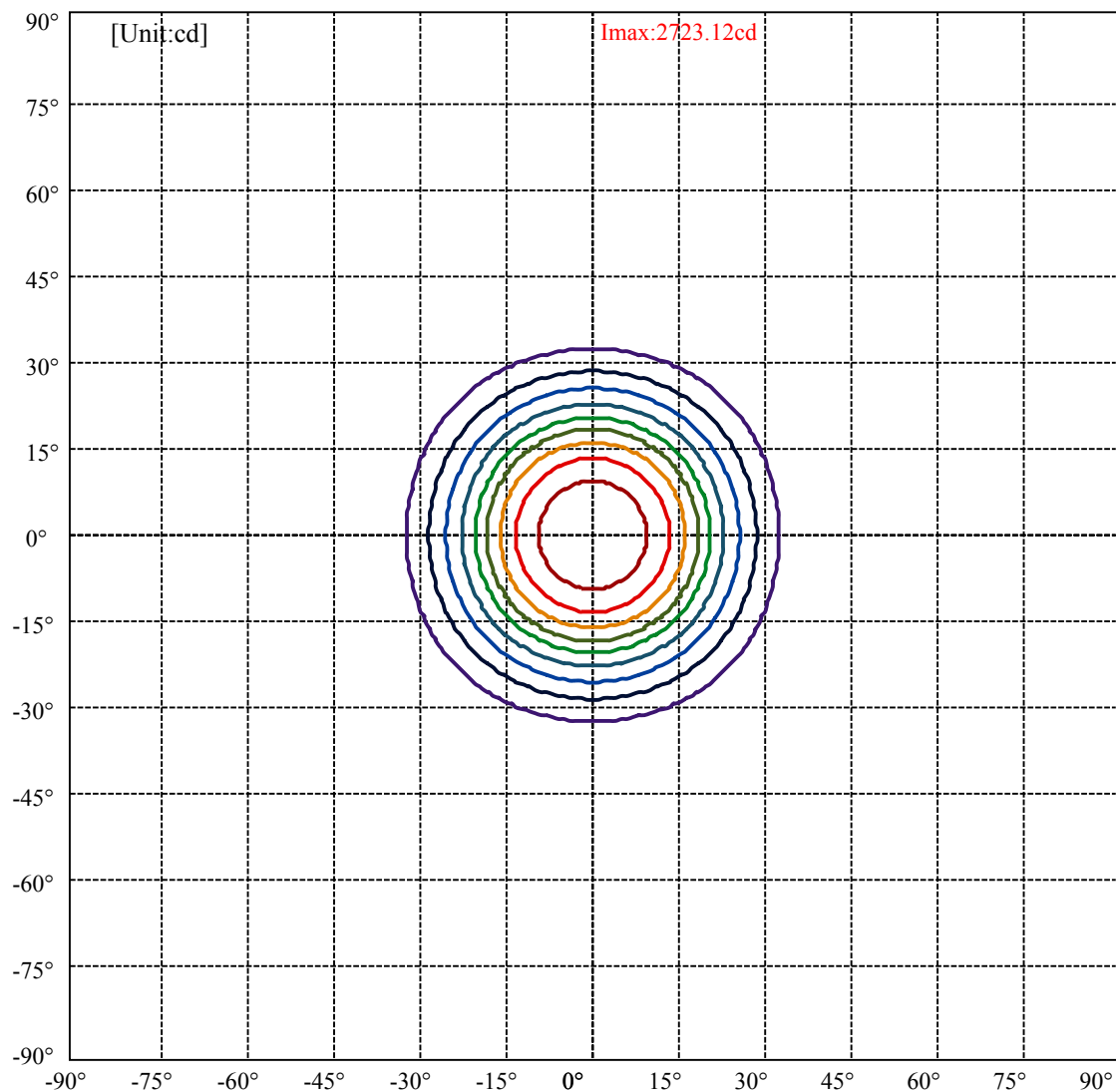
Field angle(10%Imax):C0/180Left:31.9 Right:31.9

:C90/270Left:31.9 Right:31.9

Beam Angle(50%Imax):C0/180Left:20.2 Right:20.2

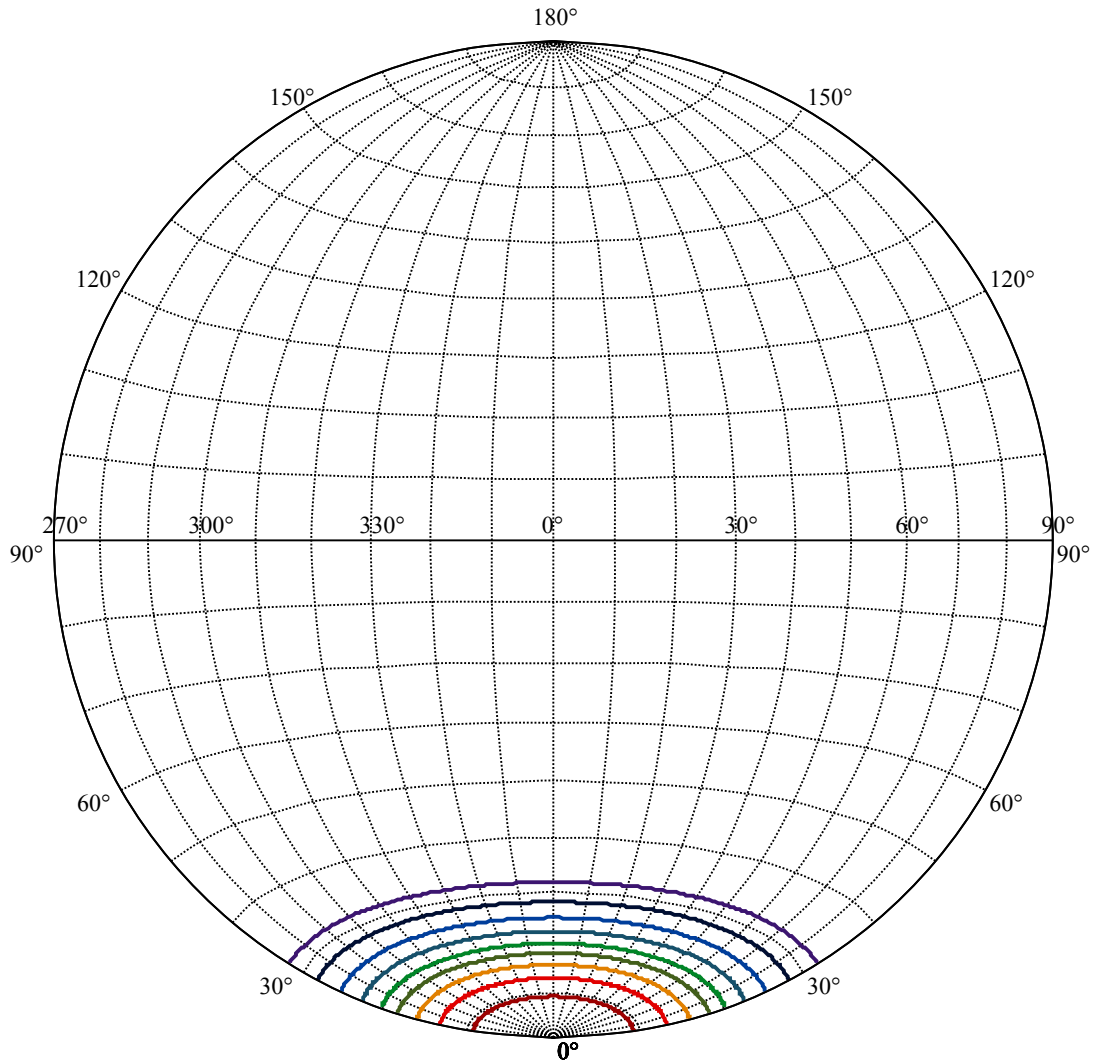
:C90/270Left:20.2 Right:20.2





(10%Imax) 272.312	—
(20%Imax) 544.624	—
(30%Imax) 816.936	—
(40%Imax) 1089.25	—
(50%Imax) 1361.56	—
(60%Imax) 1633.87	—
(70%Imax) 1906.18	—
(80%Imax) 2178.5	—
(90%Imax) 2450.81	—





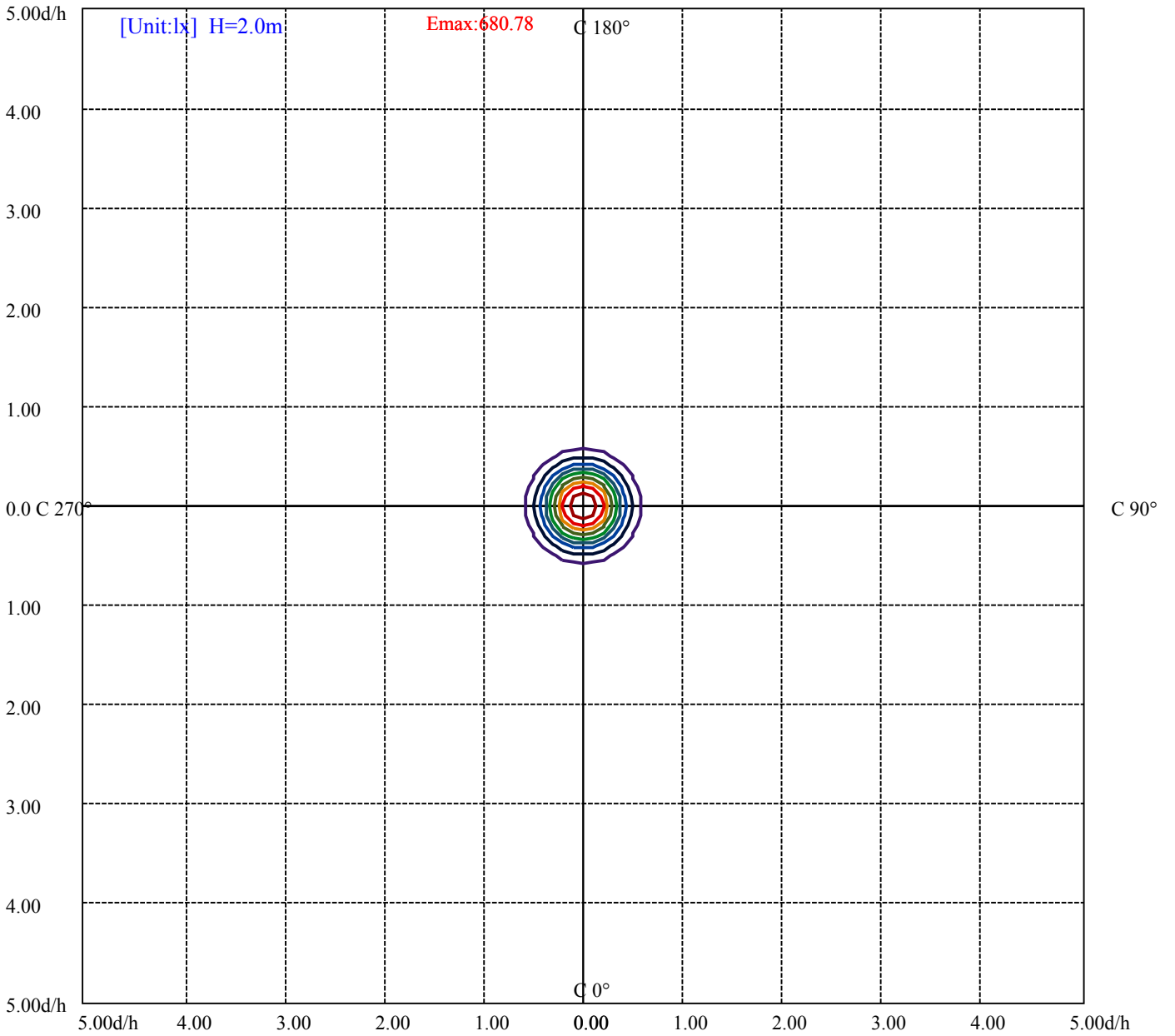
House

[Unit:cd]

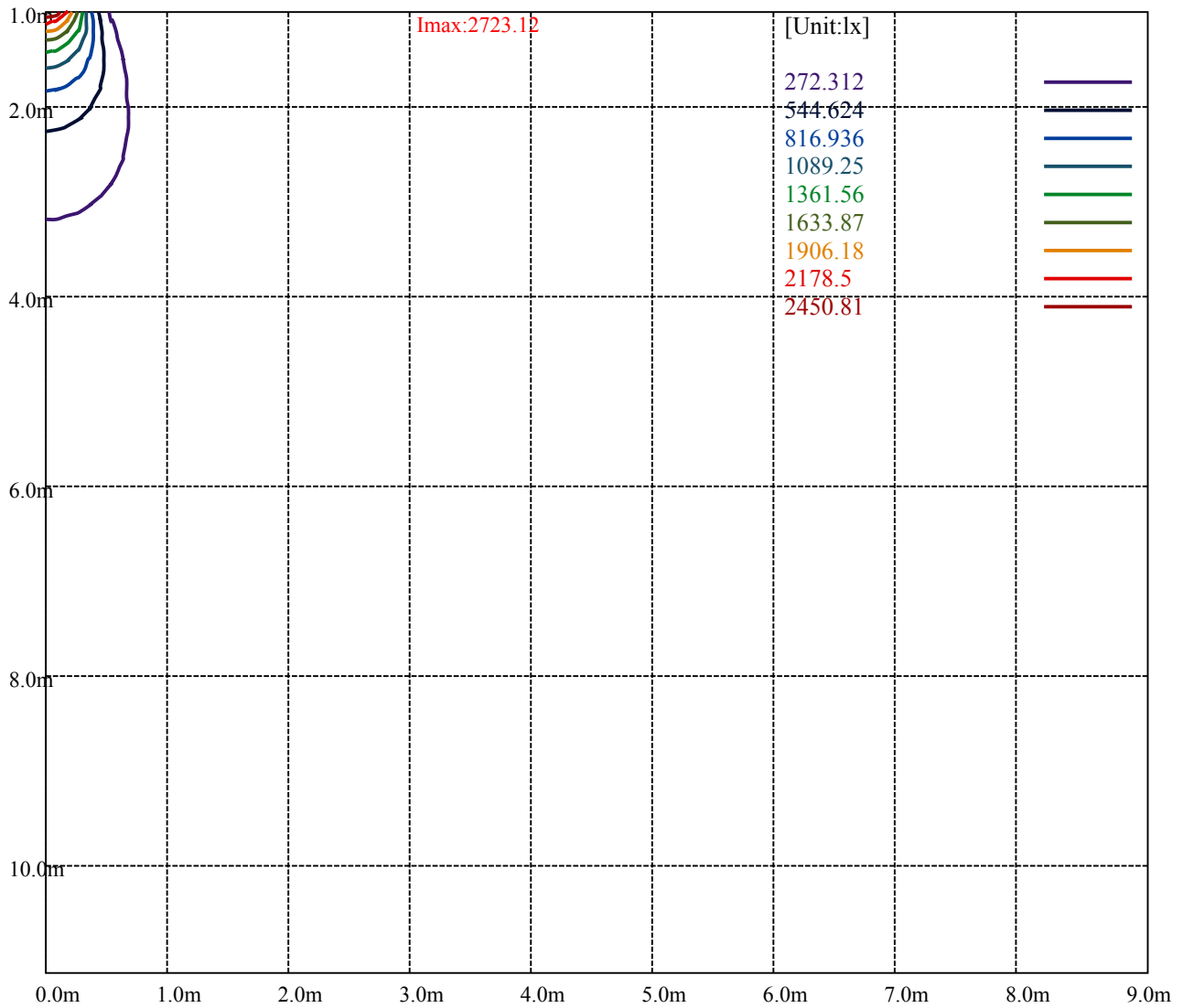
Road

**Imax:2723.12**

(10%Imax)	272.312	—
(20%Imax)	544.624	—
(30%Imax)	816.936	—
(40%Imax)	1089.25	—
(50%Imax)	1361.56	—
(60%Imax)	1633.87	—
(70%Imax)	1906.18	—
(80%Imax)	2178.5	—
(90%Imax)	2450.81	—



- (10%Emax) 68.078
- (20%Emax) 136.156
- (30%Emax) 204.234
- (40%Emax) 272.3125
- (50%Emax) 340.39
- (60%Emax) 408.4675
- (70%Emax) 476.545
- (80%Emax) 544.625
- (90%Emax) 612.7025



Luminance Table

$\gamma$	45	50	55	60	65	70	75	80	85
C0	0	0	0	0	0	0	0	0	0
C45	0	0	0	0	0	0	0	0	0
C90	0	0	0	0	0	0	0	0	0

L(Hor)(65)	L(Ver)(65)	L45(65)	L(Hor)(75)	L(Ver)(75)	L45(75)	L(Hor)(85)	L(Ver)(85)	L45(85)
0	0	0	0	0	0	0	0	0

Glare Table

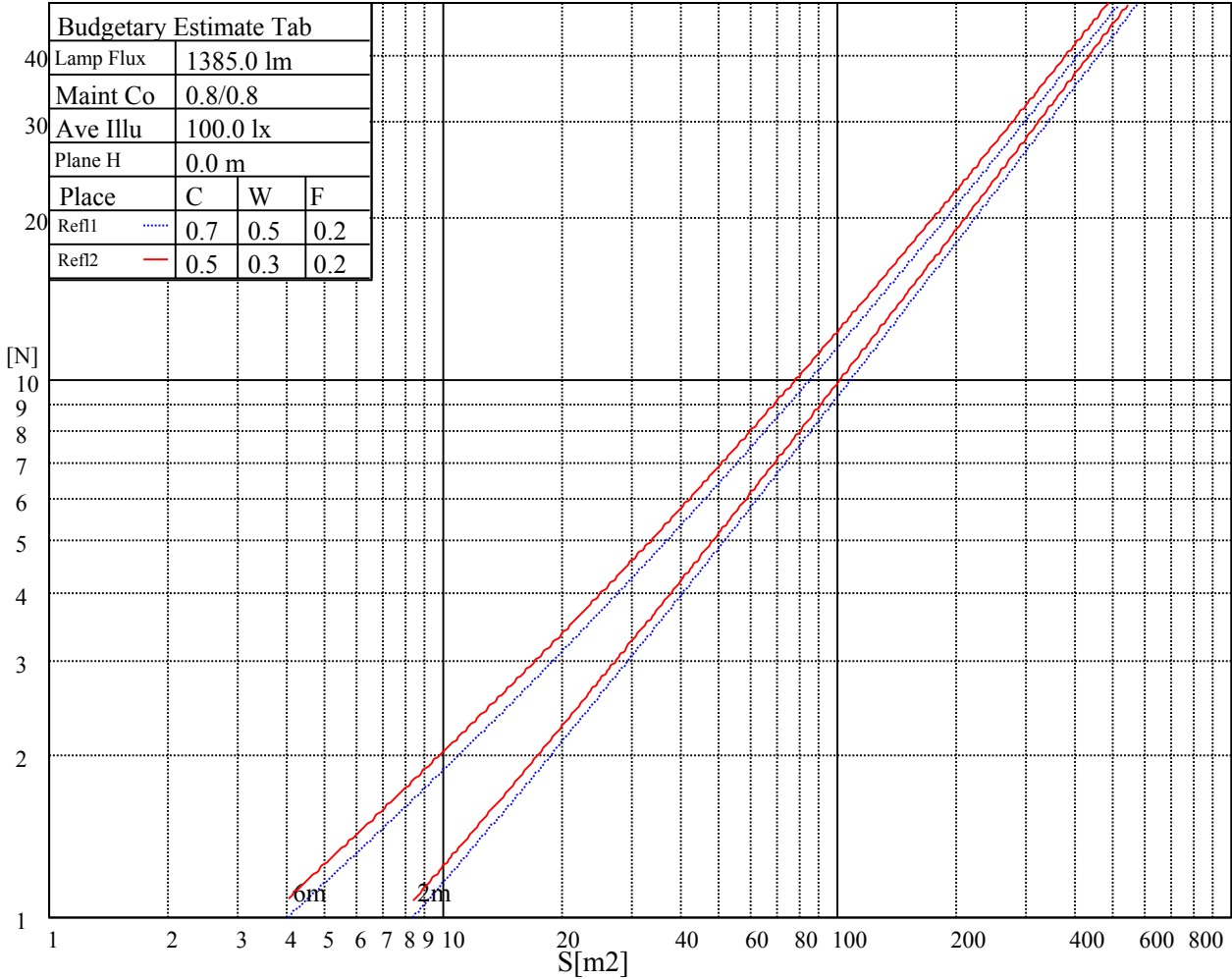
Glare	Quality	Service Values Illuminance(lx)							
1.15	A	2000	1000	500	<=300				
1.5	B		2000	1000	500	<=300			
1.85	C			2000	1000	500	<=300		
2.2	D				2000	1000	500	<=300	
2.55	E					2000	1000	500	<=300
		a	b	c	d	e	f	g	h

Luminance Limiting Curve

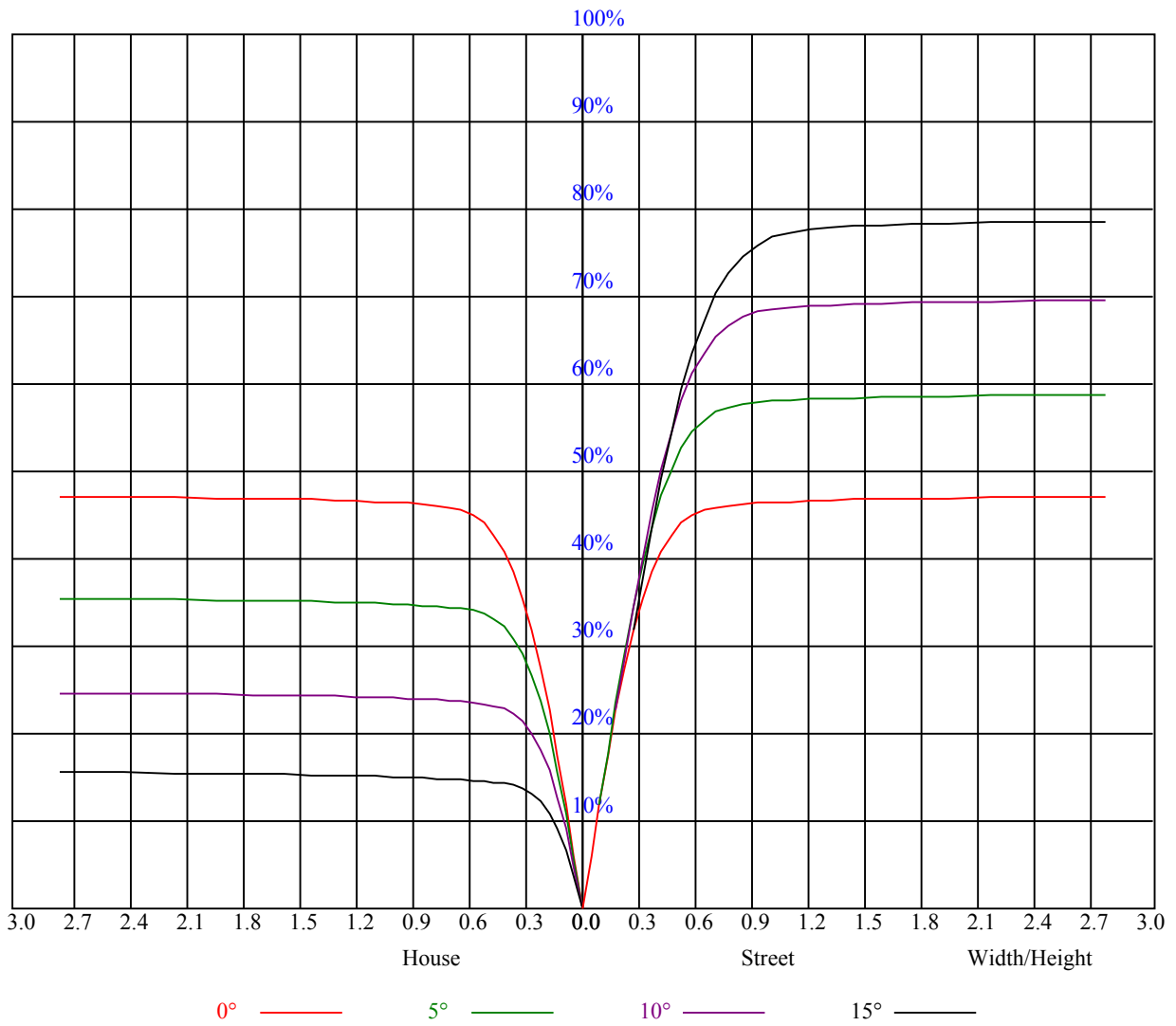


Illumination assessment according UGR											
Rf of Ceiling	70	70	50	50	30	70	70	50	50	30	
Rf of Wall	50	30	50	30	30	50	30	50	30	30	
Rf of Floor	20	20	20	20	20	20	20	20	20	20	
Room dimensions		Viewed crosswise					Viewed endwise				
X	Y										
2H	2H	非数字	非数字	非数字	非数字	非数字	非数字	非数字	非数字	非数字	
	3H	非数字	非数字	非数字	非数字	非数字	非数字	非数字	非数字	非数字	
	4H	非数字	非数字	非数字	非数字	非数字	非数字	非数字	非数字	非数字	
	6H	非数字	非数字	非数字	非数字	非数字	非数字	非数字	非数字	非数字	
	8H	非数字	非数字	非数字	非数字	非数字	非数字	非数字	非数字	非数字	
	12H	非数字	非数字	非数字	非数字	非数字	非数字	非数字	非数字	非数字	
4H	2H	非数字	非数字	非数字	非数字	非数字	非数字	非数字	非数字	非数字	
	3H	非数字	非数字	非数字	非数字	非数字	非数字	非数字	非数字	非数字	
	4H	非数字	非数字	非数字	非数字	非数字	非数字	非数字	非数字	非数字	
	6H	非数字	非数字	非数字	非数字	非数字	非数字	非数字	非数字	非数字	
	8H	非数字	非数字	非数字	非数字	非数字	非数字	非数字	非数字	非数字	
	12H	非数字	非数字	非数字	非数字	非数字	非数字	非数字	非数字	非数字	
8H	4H	非数字	非数字	非数字	非数字	非数字	非数字	非数字	非数字	非数字	
	6H	非数字	非数字	非数字	非数字	非数字	非数字	非数字	非数字	非数字	
	8H	非数字	非数字	非数字	非数字	非数字	非数字	非数字	非数字	非数字	
	12H	非数字	非数字	非数字	非数字	非数字	非数字	非数字	非数字	非数字	
12H	4H	非数字	非数字	非数字	非数字	非数字	非数字	非数字	非数字	非数字	
	6H	非数字	非数字	非数字	非数字	非数字	非数字	非数字	非数字	非数字	
	8H	非数字	非数字	非数字	非数字	非数字	非数字	非数字	非数字	非数字	
Variation with the observer position at spacings:											
S = 1.0H	非数字/非数字					非数字/非数字					
S = 1.5H	非数字/非数字					非数字/非数字					
S = 2.0H	非数字/非数字					非数字/非数字					
Standard tables:	BK0					BK0					
Uncorrected UGR	负无穷大					负无穷大					

UGR calculation is based on CIE Publ. 117 ,S/H = 0.25



RHOCC	80			70			50			30			10			0
RHOW	50	30	10	50	30	10	50	30	10	50	30	10	50	30	10	0
RCR	COEFFICIENTS OF UTILIZATION RHOF=20 CU															
0	1.13	1.13	1.13	1.10	1.10	1.10	1.06	1.06	1.06	1.01	1.01	1.01	0.97	0.97	0.97	0.95
1	1.06	1.04	1.02	1.04	1.02	1.00	1.00	0.98	0.97	0.96	0.95	0.94	0.93	0.92	0.91	0.90
2	1.00	0.96	0.93	0.98	0.95	0.92	0.95	0.92	0.90	0.92	0.90	0.88	0.90	0.88	0.86	0.85
3	0.94	0.90	0.87	0.93	0.89	0.86	0.90	0.87	0.85	0.88	0.85	0.83	0.86	0.84	0.82	0.81
4	0.89	0.85	0.81	0.88	0.84	0.81	0.86	0.83	0.80	0.84	0.81	0.79	0.83	0.80	0.78	0.77
5	0.85	0.80	0.77	0.84	0.80	0.76	0.82	0.79	0.76	0.81	0.78	0.75	0.79	0.77	0.74	0.73
6	0.81	0.76	0.73	0.80	0.76	0.72	0.79	0.75	0.72	0.78	0.74	0.71	0.76	0.73	0.71	0.70
7	0.77	0.72	0.69	0.77	0.72	0.69	0.76	0.71	0.68	0.74	0.71	0.68	0.73	0.70	0.68	0.67
8	0.74	0.69	0.66	0.73	0.69	0.66	0.72	0.68	0.65	0.72	0.68	0.65	0.71	0.67	0.65	0.64
9	0.71	0.66	0.63	0.70	0.66	0.63	0.70	0.65	0.63	0.69	0.65	0.62	0.68	0.65	0.62	0.61
10	0.68	0.63	0.60	0.68	0.63	0.60	0.67	0.63	0.60	0.66	0.63	0.60	0.66	0.62	0.60	0.59





Intensity data(cd)

C/γ(°)	0.0	1.0	2.0	3.0	4.0	5.0	6.0	7.0	8.0
0.0	2727.27	2723.95	2721.18	2702.36	2679.11	2644.24	2601.62	2565.09	2528.00
45.0	2721.18	2728.38	2725.61	2709.56	2689.08	2660.85	2632.06	2596.64	2552.35
90.0	2721.74	2710.11	2688.52	2661.95	2634.28	2604.39	2560.10	2509.18	2455.49
135.0	2722.29	2716.75	2700.15	2681.33	2654.21	2628.19	2602.17	2551.80	2508.07
180.0	2727.27	2727.27	2716.75	2701.81	2674.69	2655.87	2626.53	2592.76	2541.84
225.0	2721.18	2716.20	2700.15	2678.56	2659.74	2623.76	2578.37	2539.62	2487.04
270.0	2721.74	2722.29	2720.63	2713.99	2697.93	2661.95	2625.42	2586.67	2532.98
315.0	2722.29	2727.27	2716.75	2707.90	2686.31	2654.21	2616.56	2571.73	2524.68
360.0	2727.27	2723.95	2721.18	2702.36	2679.11	2644.24	2601.62	2565.09	2528.00
C/γ(°)	9.0	10.0	11.0	12.0	13.0	14.0	15.0	16.0	17.0
0.0	2467.11	2413.42	2350.31	2278.35	2170.97	2082.40	1991.07	1886.45	1752.49
45.0	2510.29	2449.95	2390.17	2299.39	2221.34	2136.10	2038.12	1906.38	1793.46
90.0	2382.97	2325.40	2255.66	2160.45	2068.56	1972.80	1838.85	1722.60	1608.58
135.0	2457.70	2405.67	2339.80	2276.14	2203.07	2102.88	2012.10	1884.24	1774.08
180.0	2504.20	2460.47	2413.42	2345.89	2283.34	2198.64	2120.60	2023.17	1903.06
225.0	2436.67	2366.37	2301.60	2234.62	2159.34	2078.53	1963.95	1865.42	1763.01
270.0	2493.68	2443.86	2387.40	2303.82	2236.29	2154.36	2062.48	1940.14	1836.63
315.0	2479.84	2428.36	2351.97	2281.68	2210.27	2122.81	2009.34	1913.02	1776.30
360.0	2467.11	2413.42	2350.31	2278.35	2170.97	2082.40	1991.07	1886.45	1752.49
C/γ(°)	18.0	19.0	20.0	21.0	22.0	23.0	24.0	25.0	26.0
0.0	1642.34	1496.21	1379.97	1081.83	1081.83	999.80	899.44	799.14	674.82
45.0	1684.96	1570.94	1425.91	1311.33	1202.28	1067.22	962.60	867.39	760.00
90.0	1467.98	1356.16	1098.33	1098.33	997.53	898.33	809.27	732.00	636.18
135.0	1658.95	1544.37	1394.91	1277.01	1156.89	1047.29	913.89	816.47	729.56
180.0	1800.65	1682.20	1554.33	1403.77	1285.31	1165.19	1044.52	915.00	824.22
225.0	1648.98	1510.05	1391.04	1095.45	1095.45	1017.34	918.26	806.39	722.64
270.0	1701.57	1587.54	1465.76	1326.83	1216.67	1108.73	1004.11	888.43	810.38
315.0	1663.93	1547.69	1408.20	1099.93	1099.93	1047.01	949.76	857.87	771.96
360.0	1642.34	1496.21	1379.97	1081.83	1081.83	999.80	899.44	799.14	674.82
C/γ(°)	27.0	28.0	29.0	30.0	31.0	32.0	33.0	34.0	35.0
0.0	578.89	493.48	413.71	324.37	260.99	206.30	158.59	108.55	81.54
45.0	670.33	563.50	483.79	411.28	343.75	281.75	281.75	159.25	116.80
90.0	560.01	484.57	413.21	331.68	272.95	204.86	155.82	115.41	78.77
135.0	623.28	545.79	468.29	383.60	320.50	291.16	291.16	147.46	107.66
180.0	733.44	628.82	546.89	450.58	379.73	314.96	284.52	284.52	139.93
225.0	621.51	540.42	461.43	388.97	308.15	250.03	197.22	149.62	100.96
270.0	732.88	650.40	556.30	480.47	403.53	322.16	293.37	293.37	153.00
315.0	662.03	576.62	494.97	417.53	330.35	268.52	213.78	152.72	112.76
360.0	578.89	493.48	413.71	324.37	260.99	206.30	158.59	108.55	81.54
C/γ(°)	36.0	37.0	38.0	39.0	40.0	41.0	42.0	43.0	44.0
0.0	62.99	54.25	46.39	39.08	34.82	31.16	28.01	24.69	22.53
45.0	79.76	62.72	53.31	46.11	40.41	35.54	31.99	28.06	25.41
90.0	61.33	52.03	45.56	39.36	35.54	32.05	28.95	25.57	23.41
135.0	72.13	55.69	46.72	40.52	34.76	31.33	28.34	25.74	22.86
180.0	101.13	71.74	51.53	43.29	37.25	31.83	28.67	25.79	23.30
225.0	74.40	57.57	48.16	40.35	35.54	30.94	27.84	25.02	22.09
270.0	107.94	79.32	61.22	52.20	45.11	38.86	34.54	31.00	27.84
315.0	85.24	64.27	54.80	47.16	40.13	35.54	31.66	28.34	24.96
360.0	62.99	54.25	46.39	39.08	34.82	31.16	28.01	24.69	22.53

Intensity data(cd)

C/γ(°)	45.0	46.0	47.0	48.0	49.0	50.0	51.0	52.0	53.0
0.0	20.81	19.37	17.99	17.10	16.27	15.39	14.78	14.28	13.62
45.0	23.19	21.09	19.65	18.54	17.33	16.50	15.78	15.11	14.45
90.0	21.64	19.82	18.65	17.71	16.61	15.89	15.11	14.50	14.06
135.0	21.03	19.60	18.05	17.10	16.33	15.39	14.78	14.28	13.67
180.0	20.76	19.10	17.82	16.50	15.67	14.83	14.28	13.73	13.28
225.0	20.26	18.76	17.55	16.44	15.67	14.95	14.34	13.67	13.23
270.0	24.41	22.25	20.59	19.15	17.82	16.88	16.05	15.17	14.56
315.0	22.58	20.81	19.37	17.88	16.94	16.11	15.17	14.56	13.95
360.0	20.81	19.37	17.99	17.10	16.27	15.39	14.78	14.28	13.62
C/γ(°)	54.0	55.0	56.0	57.0	58.0	59.0	60.0	61.0	62.0
0.0	13.23	12.73	12.34	12.01	11.73	11.29	11.02	10.74	10.52
45.0	13.95	13.45	13.01	12.57	12.18	11.90	11.46	11.18	10.85
90.0	13.51	13.01	12.62	12.23	11.90	11.51	11.18	10.96	10.63
135.0	13.23	12.84	12.51	12.12	11.73	11.51	11.24	10.90	10.63
180.0	12.90	12.40	12.12	11.79	11.46	11.18	10.96	10.68	10.41
225.0	12.84	12.34	12.01	11.73	11.35	11.07	10.79	10.52	10.24
270.0	14.00	13.40	12.95	12.57	12.07	11.79	11.46	11.13	10.79
315.0	13.45	13.01	12.62	12.18	11.85	11.51	11.24	10.90	10.63
360.0	13.23	12.73	12.34	12.01	11.73	11.29	11.02	10.74	10.52
C/γ(°)	63.0	64.0	65.0	66.0	67.0	68.0	69.0	70.0	71.0
0.0	10.24	10.02	9.85	9.63	9.35	9.13	8.91	8.69	8.52
45.0	10.63	10.41	10.19	9.91	9.69	9.41	9.24	8.97	8.80
90.0	10.41	10.19	9.91	9.69	9.47	9.19	8.97	8.75	8.64
135.0	10.46	10.13	9.96	9.69	9.52	9.35	9.13	8.86	8.69
180.0	10.19	9.96	9.80	9.63	9.41	9.24	9.02	8.86	8.64
225.0	10.07	9.80	9.63	9.41	9.24	8.97	8.80	8.64	8.41
270.0	10.52	10.24	10.07	9.80	9.58	9.35	9.13	8.91	8.69
315.0	10.35	10.19	9.91	9.74	9.47	9.19	9.02	8.80	8.64
360.0	10.24	10.02	9.85	9.63	9.35	9.13	8.91	8.69	8.52
C/γ(°)	72.0	73.0	74.0	75.0	76.0	77.0	78.0	79.0	80.0
0.0	8.30	8.14	7.92	7.75	7.53	7.42	7.25	7.03	6.81
45.0	8.58	8.36	8.14	7.97	7.75	7.64	7.47	7.31	7.09
90.0	8.41	8.25	8.03	7.92	7.69	7.53	7.36	7.14	6.97
135.0	8.47	8.30	8.14	7.92	7.75	7.58	7.42	7.25	7.03
180.0	8.47	8.30	8.19	7.92	7.80	7.64	7.47	7.31	7.14
225.0	8.25	8.08	7.92	7.75	7.53	7.36	7.25	7.09	6.86
270.0	8.52	8.30	8.19	7.97	7.75	7.64	7.42	7.25	7.09
315.0	8.47	8.25	8.08	7.86	7.69	7.47	7.31	7.14	6.97
360.0	8.30	8.14	7.92	7.75	7.53	7.42	7.25	7.03	6.81
C/γ(°)	81.0	82.0	83.0	84.0	85.0	86.0	87.0	88.0	89.0
0.0	6.70	6.59	6.37	6.20	6.09	5.98	5.87	5.87	5.70
45.0	6.92	6.75	6.59	6.42	6.25	6.09	5.98	5.92	5.76
90.0	6.81	6.64	6.48	6.31	6.20	6.03	5.98	5.87	5.70
135.0	6.86	6.70	6.48	6.42	6.20	6.09	5.98	5.81	5.70
180.0	6.97	6.81	6.64	6.48	6.31	6.14	6.03	5.87	5.87
225.0	6.75	6.59	6.42	6.31	6.14	6.03	5.92	5.81	5.65
270.0	6.92	6.75	6.64	6.48	6.25	6.20	6.09	5.98	5.92
315.0	6.81	6.64	6.48	6.37	6.25	6.09	5.98	5.87	5.87
360.0	6.70	6.59	6.37	6.20	6.09	5.98	5.87	5.87	5.70

Intensity data(cd)

<b>C/γ(°)</b>	<b>90.0</b>
<b>0.0</b>	<b>5.70</b>
<b>45.0</b>	<b>5.70</b>
<b>90.0</b>	<b>5.76</b>
<b>135.0</b>	<b>5.70</b>
<b>180.0</b>	<b>5.65</b>
<b>225.0</b>	<b>5.70</b>
<b>270.0</b>	<b>5.70</b>
<b>315.0</b>	<b>5.70</b>
<b>360.0</b>	<b>5.70</b>